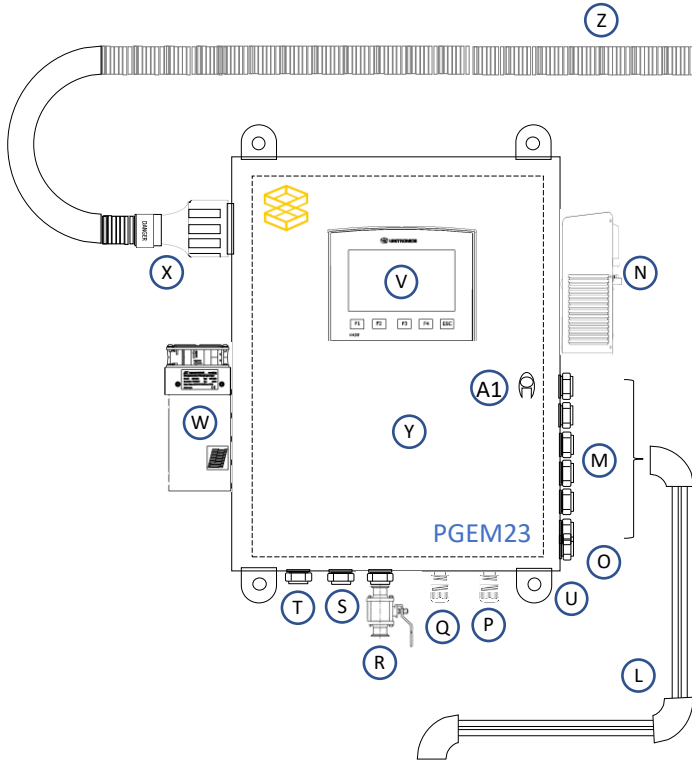
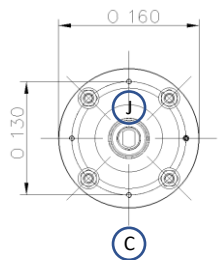
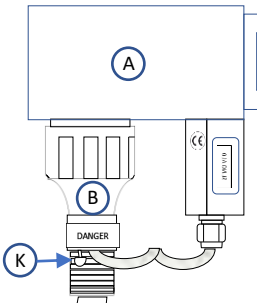


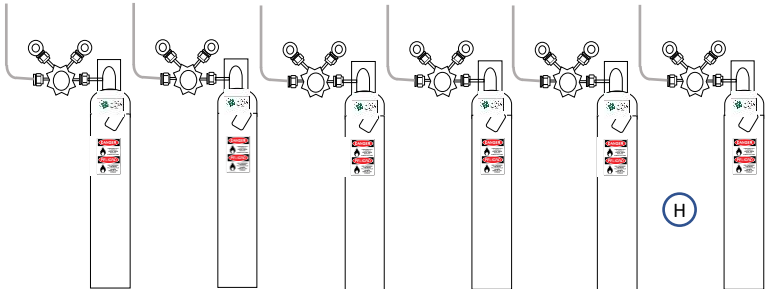
INDUSMATION PGEM23 PGA CEMS GENERAL LAYOUT



O – Exhaust Gas Outlet is vented to atmosphere (14.7 psi), should not have any restriction on Flow (1 LPM), not pressurized or not under vacuum. Otherwise, hazardous gas may accumulate inside the PGEM23 analyzer and will be become dangerous and affect the performance.



Drg. Ref	Item	Drg. Ref	Item	Drg. Ref	Item
(A)	S100-HEATED PROBE 15.6 X 14.3 X 7.0"	(J)	SAMPLE GAS NPT 1/8" FEMALE THREAD	(S)	BLOW BACK AIR INLET SS316 (3/8)" FITTINGS
(B)	HLB1-SAMPLE LINE BOOT – PROBE SIDE	(K)	SAMPLE LINE TEMPERAURE LED	(T)	WATER DRAIN OUTLET (1/4)" FITTINGS
(C)	DN65 PN6 EN1092 PROBE FLANGE	(L)	SS316 1/4" CAL GAS TUBING	(U)	ANALYZER MOUNTING RING (4)
(D)	RESERVED	(M)	SPAN CAL GAS INLET SS316 1/4" FITTINGS	(V)	5.7" HMI COLOR TOUCH SCREEN
(E)	SS316 STINGER TUBE	(N)	1000 BTU AC UNIT	(W)	SAMPLE CHILLER
(F)	RESERVED	(O)	EXHAUST GAS OUTLET SS316 1/4" FITTINGS	(X)	HLB1-SAMPLE LINE BOOT – ANALYZER SIDE
(G)	RESERVED	(P)	AC POWER CABLE GLAND 115 / 230 V AC & 5KVA 1P 3C CABLE	(Y)	Ei3000 ANALYZER 36 X 30 X 12"
(H)	140 CFT SPAN GAS CYLINDERS, REGS	(Q)	SIGNAL CABLE GLAND Cat5E & 18AWGx14C	(Z)	10 FEET HEATED SAMPLE LINE
(I)	RESERVED	(R)	ACID FILTER DRAIN VALVE	(A1)	ANALYZER LOCK



PARTS, DIMENSIONS AND SPECS ARE SUBJECT TO CHANGE WITHOUT NOTICE
PGEM23 GENERAL LAYOUT
 DRAWING IS NOT TO SCALE